



# Scanvest

The CColP Company



## LiftAll: IP Elevator Emergency Call – EN 81-28. Standard-compliant. Flexible. Cost-saving.

In order to ensure the safe use of elevators, the European standard EN 81 was created for elevator operators. In addition, the requirements of the amended Ordinance on Industrial Safety and Health\* have to be met: Accordingly, all elevators must be able to establish a voice connection with a permanently staffed emergency call center and document emergency calls. Technologies such as PSTN, GSM and UMTS are not a reliable option here – especially as they will fall victim to the renewal of telecommunications networks in the near future.

Whether passenger, freight, construction or fire department elevators – with our LiftAll IP elevator emergency call system, you are on the safe side both in terms of availability and in terms of standards and regulations. You can use it to equip new elevators as well as easily upgrade existing elevators. Thanks to the clever system design, the cost of adapting the infrastructure is kept to a minimum – a budget-friendly and resource-saving solution.

### IP Elevator Emergency Call – overview

- Meet standards and legal requirements
- Permanent live monitoring of the system > Calls always reach their destination
- Highly flexible, infrastructure-friendly and cost-optimized solution – future-proof thanks to IP
- Patented, automatic emergency call simulation – no personnel required for emergency call testing!
- Barrier-free two-way communication in excellent audio quality

EN 81-28  
compliant

\*German: Betriebssicherheitsverordnung

[www.scanvest.de](http://www.scanvest.de)

## Advantages & features

### Meet standards & legal requirements



- EN 81-28: System enables standard-compliant emergency call communication and system monitoring
- OSHA\*: Two-way emergency call communication from the elevator cabin, cabin roof/floor and engine room
- VdS 2465: System transmits alarm messages in accordance with VdS protocol (optional)

### Permanent live monitoring of the system



- Patented, automatic emergency call simulation – no personnel required!
  - Remote functionality test of emergency call button, microphone and loudspeaker (mechanical and functional)
- Permanent availability check of system and components via IP network connection
  - No call is lost
  - Error messages are issued according to an individually defined action chain

### Highly flexible and infrastructure-friendly



- Minimal infrastructure: one LiftAll central unit controls up to 3 intercom stations
- IP cabling and license are only required once for the central unit
- Wide range of integration options: Flexible intercom station kit with additional options, cabin roof/floor intercom stations, remote 2nd emergency call button
- Standardized components, e.g. call buttons from Schaefer

### Excellent audio quality



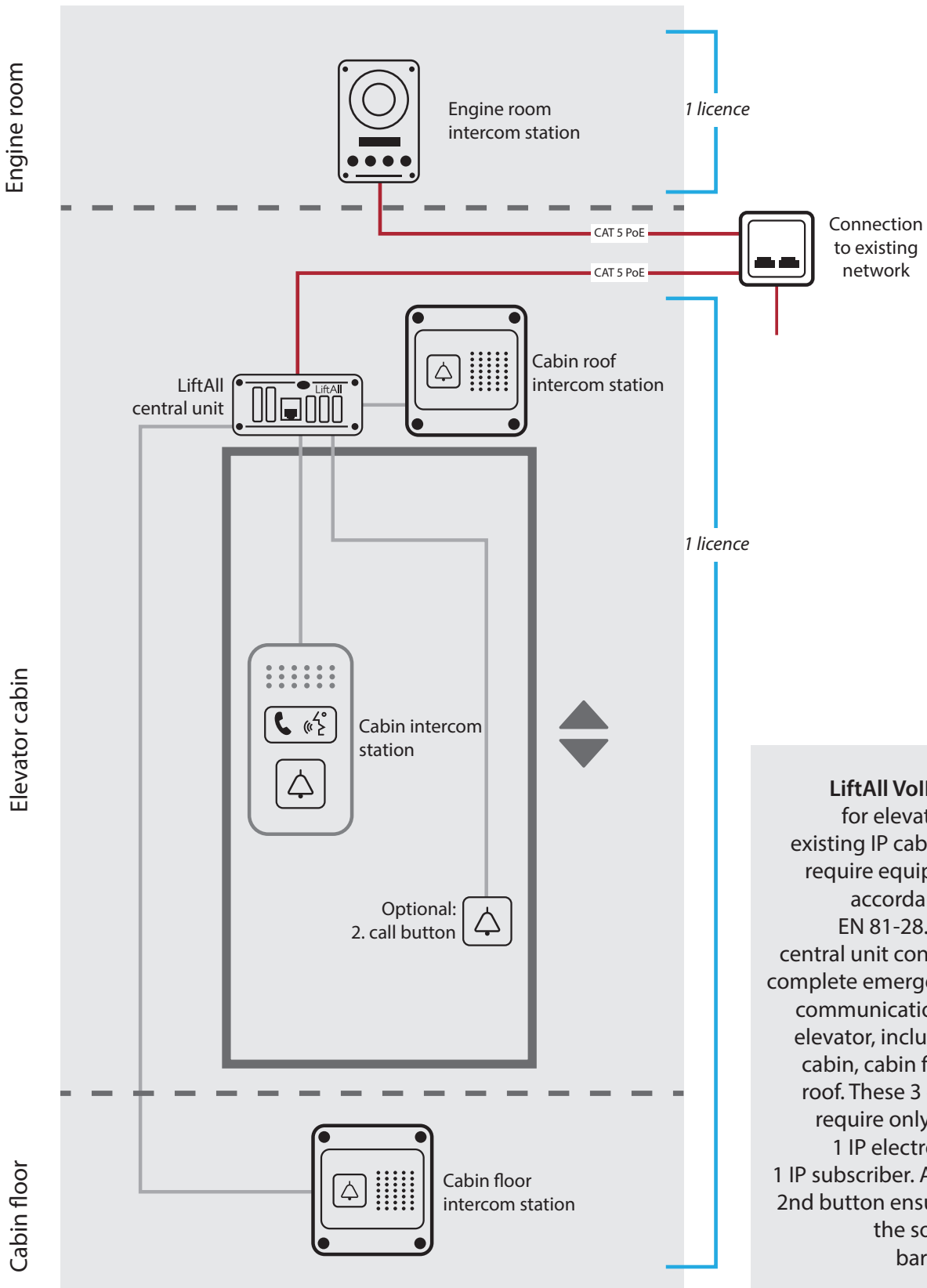
- Excellent speech intelligibility
- Acoustic echo suppression and active noise canceling
- wOpen duplex conference with up to 95 dBA – hands-free calling WITHOUT pressing a button

### Optional: Software tools for documentation and monitoring

- ScanNotifier for documenting all devices and connection data and for comparing the nominal/actual status of the system in an online matrix
- ScanDok documentation unit for logging and evaluating messages in a relational database

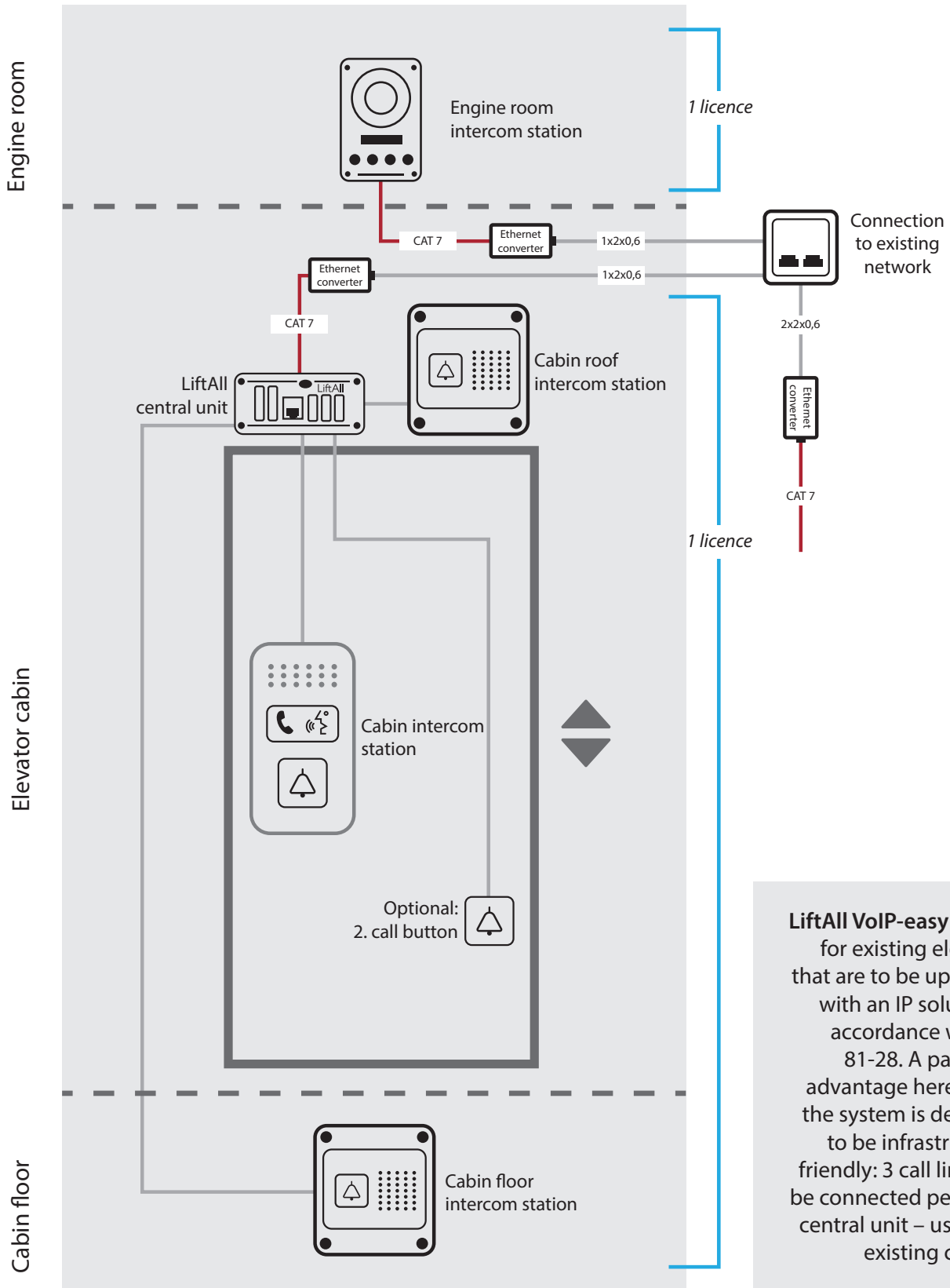
\*German: Betriebssicherheitsverordnung

## Option 1: LiftAll VoIP



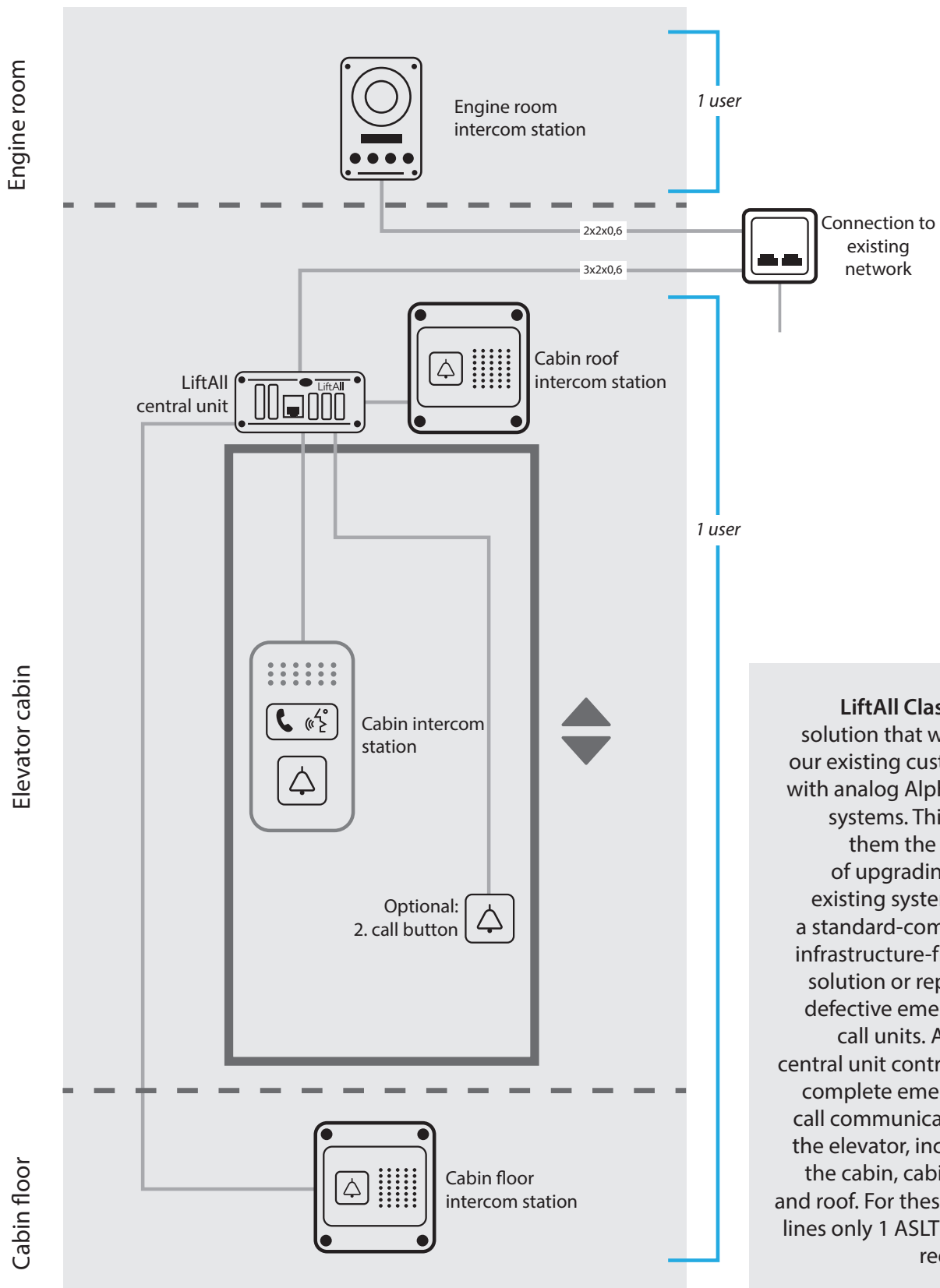
**LiftAll VoIP** is ideal for elevators with existing IP cabling that require equipment in accordance with EN 81-28. A LiftAll central unit controls the complete emergency call communication of the elevator, including the cabin, cabin floor and roof. These 3 call lines require only 1 cable, 1 IP electronic and 1 IP subscriber. A remote 2nd button ensures that the solution is barrier-free.

Option 2: LiftAll VoIP-easy



**LiftAll VoIP-easy** is ideal for existing elevators that are to be upgraded with an IP solution in accordance with EN 81-28. A particular advantage here is that the system is designed to be infrastructure-friendly: 3 call lines can be connected per LiftAll central unit – using the existing cabling.

## Option 3: LiftAll Classic



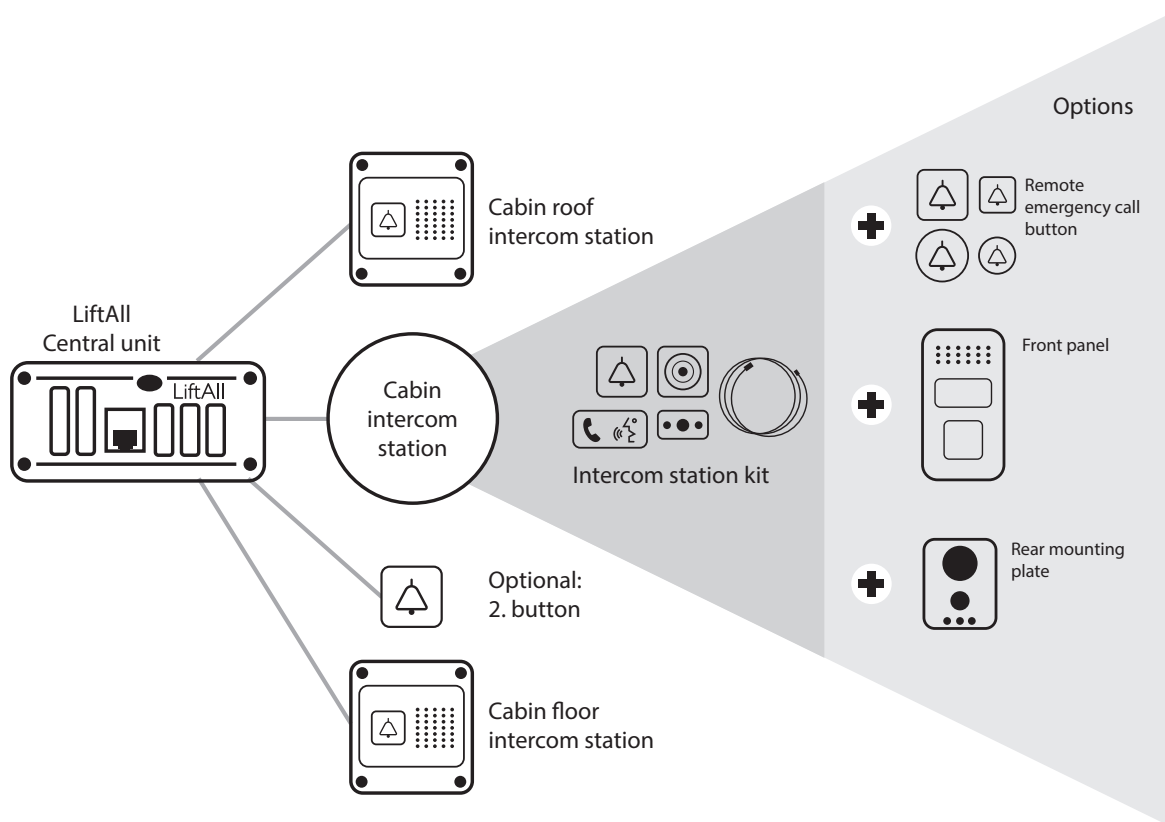
**LiftAll Classic** is a solution that we offer our existing customers with analog AlphaCom systems. This gives them the option of upgrading their existing system with a standard-compliant, infrastructure-friendly solution or replacing defective emergency call units. A LiftAll central unit controls the complete emergency call communication of the elevator, including the cabin, cabin floor and roof. For these 3 call lines only 1 ASLT port is required.

## System components & design

Thanks to its modular design, the LiftAll IP elevator emergency call system can meet customer requirements in a highly flexible manner: 3 intercom options can be connected to one LiftAll central unit, e.g. one intercom station in the cabin and one cabin roof/floor intercom station each. To enable wheelchair-accessible use of the elevator emergency call, a 2nd emergency call button can also be installed in the car. We offer cable lengths of 5-15 m for connecting the components to the central unit.

### Use of high-quality standard components

Our solution is made up of standardized components. This enables us to guarantee our customers consistent quality and cost-optimized work, even when replacing components.



## Optional: Emergency call button with automatic function test

In addition to flexibility and system availability, the mechanical components also play an important role in elevator emergency call systems. Our patented emergency call button with remote function test is automatically checked for mechanical functionality by the system. This process replaces manual testing by personnel – a cost- and resource-saving and, above all, safety-enhancing measure that you can opt for.

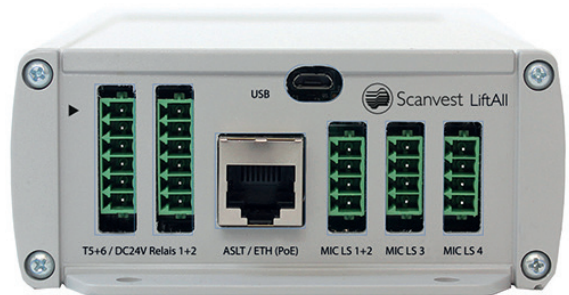
We obtain the button from Schaefer. It is available in various designs and sizes depending on customer requirements and the intended use.



## LiftAll central unit

The LiftAll IP central unit provides emergency call communication in accordance with EN 81-28 in passenger, freight, construction or fire department elevators. It is usually simply mounted on top of the elevator cabin.

One central unit controls up to 3 intercom stations via an IP license. It is therefore able to cover the entire elevator in terms of communication: Cabin, cabin roof and cabin floor. In addition, it can control a remote button in the cabin. Thanks to an electromechanical automatic call button test, sound and network tests and automatic status messages, the function of the unit and the connected intercom stations is fully monitored at all times.



Numerous audio features ensure excellent speech intelligibility – even with loud ambient noise and other demanding audio scenarios. In addition, the central unit can be easily integrated with existing alarm and error notification systems.

The LiftAll central unit can be used in both IP and analog elevator emergency call systems.

### Features

- Elevator emergency call functions in compliance with EN 81-28
- Excellent audio quality and speech intelligibility
- One central unit controls
  - 3 intercom units (button, microphone, loudspeaker)
  - 1 remote button
  - 2 buttons, e.g. for special functions such as staircase or emergency lighting
- Complete function monitoring:
  - Sound test for 3 intercom units
  - Network test and status messages
  - Optional: emergency call button with automatic function test
- 2 relay outputs – potential-free – for alarm and error messages to third-party systems
- Configuration via USB port
- Optional in IP systems: remote intercom stations with up to 500 m cable length

#### For use in analog systems

- Compatible with AlphaCom XE – connection via ASLT port
- Distance to the control center:
  - 2,000 m with 0.6 mm Ø
  - 3,600 m with 0.8 mm Ø

## Technical features IP

Dimensions (WxHxD)	105 x 45 x 197 mm
System	Mediton:Server; ICX-AlphaCom, ScanDAKS
Operating voltage	PoE and/or local power supply
PoE	IEEE 802.3af standard, Class 0 (0.44W to 12.95 W)
Local power supply unit	24VDC (alternative to PoE supply)
Power consumption	Idle 1.8W, max. 12W (depending on volume)
Connection IP structure	1x RJ45 10/100 Mbit/s (Ethernet)
Cable	CAT-5, 2-/4-pair
Reach	100m acc. IEEE 802.3
Relay	max: 60V DC 30Watt, 125V AC 60VA
Protocols	IPv4 (with DiffServ), SIP, TCP, UDP, HTTPS, TFTP, RTP, DHCP, SNMP, ONVIF, CCoIP®, NTP
Configuration & Operation	HTTP/HTTPS (Web configuration) DHCP and static IP TFTP (software upgrade) SNMP (Monitoring)

SIP & DTMF Support	RFC 3261 (SIP Base Standard) RFC 3515 (SIP Refer) RFC 2976 (SIP Info)  DTMF: RFC 2833, RFC 2976 (SIP Info)
Audio	Speaker distance: 7 m Broadband 200 Hz – 7 kHz (G.722) Full open-duplex, open-duplex, adaptive jitter filter, built-in tone generator, audio mixer for 3 channels, automatic level control (microphone)
Audio output/ Induction amp.	600 Ohm
Loudspeaker	10W Class D
Loudspeaker impedance	8 Ohm
Temperature	-40°C - +85°C
Humidity	30% - 70% RH (non-condensing)

## Technical features ASLT

Dimensions (WxHxD)	105 x 45 x 197 mm
System	AlphaCom XE – via ASLT port
Operating Voltage	24VDC / 0,1 A
Cable	3 twisted wire pairs 0,6-0,8 mm (e.g. IY(ST)Y 3x2x0,6)
Reach	2.000 m at 0,6 mm Ø 3.600 m at 0,8 mm Ø
Loop impedance	Max. 240 Ohm
Ports	Plug-in terminals: Cables to the control panel, buttons and pictograms

Loudspeaker impedance	50 Ohm
Frequency	300-10.000 Hz
Preamplifier output	100/300 mV
Output impedance	1.000 Ohm
Temperature	0°C - +40°C
Humidity	10% - 85% RH (non-condensing)





## Elevator intercom station kit EN 81-28

The LiftAll elevator intercom station kit consists of various components that can be flexibly mounted behind existing front plates or panels.

Three of these kits can be connected to a LiftAll central unit. Together, this results in an EN 81-28 compliant emergency call unit that scores with high availability and excellent audio quality.

We use high-quality standard components to offer our customers a cost-optimized solution with consistent long-term quality.

The intercom station kit is available as an IP and ASLT version.



### Components

- Call display module:
  - Display for outgoing call with yellow backlit receiver symbol (EN81 standard)
  - Display for voice connection with green backlit voice symbol (EN81 standard)
- Loudspeaker with cap and sealing ring
- Condenser microphone with self-adhesive attachment and microphone preamplifier

### Options

- Emergency call button with yellow bell symbol and red illuminated ring – different versions
- Emergency call button with automatic function test - different versions
- Front panel made of chrome-plated stainless steel > can be used with the MT42 or MT42-fb button
- Rear mounting panel



## Article overview – LiftAll sets + options

2111920058

LiftAll Elevator call IP – 5 m

- LiftAll IP central unit elevator emergency call
- LiftAll (VOIP) elevator intercom station kit EN81 incl. call display module, loudspeaker and microphone
- Cable set 5 m

2111920059

LiftAll Elevator call IP – 10 m

- LiftAll IP central unit elevator emergency call
- LiftAll (VOIP) elevator intercom station kit EN81 incl. call display module, loudspeaker and microphone
- Cable set 10 m

2111920060

LiftAll Elevator call IP – 15 m

- LiftAll IP central unit elevator emergency call
- LiftAll (VOIP) elevator intercom station kit EN81 incl. call display module, loudspeaker and microphone
- Cable set 15 m

2111920061

LiftAll Elevator call ASLT – 5 m

- LiftAll IP central unit elevator emergency call
- LiftAll (ASLT) elevator intercom station kit EN81 incl. call display module, loudspeaker and microphone
- Cable set 5 m

2111920062

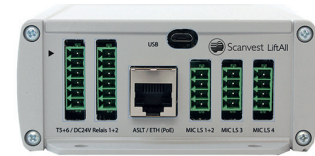
LiftAll Elevator call ASLT – 10 m

- LiftAll IP central unit elevator emergency call
- LiftAll (ASLT) elevator intercom station kit EN81 incl. call display module, loudspeaker and microphone
- Cable set 10 m

2111920063

LiftAll Elevator call ASLT – 15 m

- LiftAll IP central unit elevator emergency call
- LiftAll (ASLT) elevator intercom station kit EN81 incl. call display module, loudspeaker and microphone
- Cable set 15 m



**Important note:**  
The LiftAll sets include the cables for the call display, loudspeaker and microphone.  
You can order the call button in your preferred version separately.

## Call buttons – options

### Different versions

Call button MT42 / MT42-fb

- Emergency call button – optional with automatic function test (-fb variant)
- Available with cable lengths of 5, 10, 15 m
- Dimensions (WxHxD): 34 x 28 x 23 mm



2114920059

MT42 with cable 5 m

2114920060

MT42 with cable 10 m

2114920061

MT42 with cable 15 m

2114920062

MT42-fb with automatic function test and cable 5 m

2114920063

MT42-fb with automatic function test and cable 10 m

2114920064

MT42-fb with automatic function test and cable 15 m

### Different versions

Call button RT42 / RT42-fb

- Emergency call button – optional with automatic function test (-fb variant)
- Available with cable lengths of 5, 10, 15 m
- Dimensions (WxHxD): 34 x 40 x 25 mm



2114920065

RT42 with cable 5 m

2114920066

RT42 with cable 10 m

2114920067

RT42 with cable 15 m

2114920068

RT42-fb with automatic function test and cable 5 m

2114920069

RT42-fb with automatic function test and cable 10 m

2114920070

RT42-fb with automatic function test and cable 15 m

## Different versions

### Call button B50Q-fb

- Emergency call button with automatic function test
- Available with cable lengths of 5, 10, 15 m
- Dimensions (WxHxD): 58 x 50 x 30,5 mm



## 2114920071

B50Q-fb with automatic function test and cable 5 m

## 2114920072

B50Q-fb with automatic function test and cable 10 m

## 2114920073

B50Q-fb with automatic function test and cable 15 m

## Different versions

### Call button B50R-fb

- Emergency call button with automatic function test
- Available with cable lengths of 5, 10, 15 m
- Dimensions (WxHxD): 58 x 50 x 30,5 mm



## 2114920074

B50R-fb with automatic function test and cable 5 m

## 2114920075

B50R-fb with automatic function test and cable 10 m

## 2114920076

B50R-fb with automatic function test and cable 15 m

## Mounting options

## 2111920054

### Front panel

- Front panel with chrome-plated stainless steel front as optional addition to a LiftAll Set VoIP or ASLT
- This article is a kit that has to be completed with the LiftAll sets and call buttons
- Call button options: can be used with call button versions MT42 or MT42-fb
- Cable lengths: see LiftAll sets
- Speaker is sealed against moisture
- Microphone with poke protection



Dimensions (WxHxD): 90 x 270 x 80 mm

## 2111920055

### Rear mounting plate

- Mounting plate for loudspeaker and microphone as an optional extra for a LiftAll Set VoIP or ASLT
- This article is a kit that has to be completed with the LiftAll sets and buttons
- Call button options: can be used with all available buttons
- Cable lengths: see LiftAll sets



Dimensions (WxHxD) mounting plate:  
90 x 110 x 60 mm

## Cabin roof / floor intercom station

### Different Versions

#### Cabin roof / floor intercom station EN 81

- Cabin roof / cabin floor intercom station in housing with loudspeaker and microphone
- Emergency call button with yellow bell symbol and red illuminated ring
- Connection via spring terminals for on-site fixed wiring
- Available as IP and ASLT version, each with two selectable cable lengths
- Protection class IP-65
- Optional: emergency call button with automatic function test

#### 2111920052

LiftAll Cabin roof / floor intercom station EN81(ASLT) – cable 2 m

#### 2111920056

LiftAll Cabin roof / floor intercom station EN81(ASLT) – cable 10 m

#### 2111920053

LiftAll Cabin roof / floor intercom station EN81(VoIP) – cable 2 m

#### 2111920057

LLiftAll Cabin roof / floor intercom station EN81(VoIP) – cable 10 m



Dimensions (WxHxD): 180x140x120mm

## Engine room intercom stations

#### 2111110122

#### IPDMH-V2\_P Desktop terminal with handset

- High-contrast display with backlighting
- Four dynamic navigation buttons: Quick access to menus & directories
- Ten DAK buttons provide one-touch access to terminals, group calls, audio monitoring, public address zones, radio channels and telephone lines
- Remote software upgrade, configuration and monitoring
- Power supply via the IP network cable with Power over Ethernet (PoE)
- Model without handset: 2111110102
- Model with goose neck micro: 2112020347
- Model with RFID: 2111520002



Dimensions (WxHxD): 225 x 75 x 176 mm

#### 2112210006

#### TCIS-6 Turbine Intercom station with scroll display

- High-end audio quality
- Digital amplifier with 10 watt output power
- Sound pressure max. 105 dB with automatic control
- Background noise analysis and suppression
- 1 relay output and 6 control I/Os
- Resistant to dirt, dust and water – IP66 protection class
- Robust aluminum frame – IK08
- All current network security standards
- Black polycarbonate front panel with PMOLED display and phonebook function



Dimensions (WxHxD): 120 x 180 x 70 mm

You can also use any other intercom station from our portfolio as an engine room intercom. Feel free to contact us if you need further information.